

Ergebnis: **617.1** (586)

Serien: 103.4 103.9 103.2 102.5 102.4 101.7

Zähler: 46 14 0 0 0 0 0 0 0

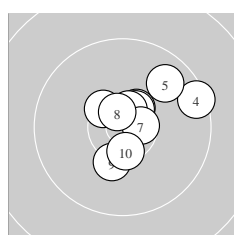
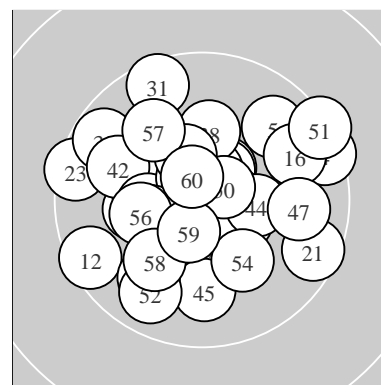
Innenzehner: 37

weiteste: 1239 (51), 1174 (4), 1165 (23)

beste Teiler 118.8 (20.) 136.1 (11.) 168.6 (26.)

Trefferlage 0.76 mm links, 0.01 mm hoch

Streuwert 4.33, horizontal: 4.75, vertikal: 3.87



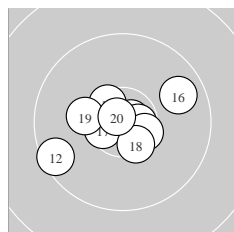
Serie 1:

10.5 *	10.5 *	10.5 *	9.5 →	9.8 ↗
10.6 *	10.6 *	10.6 *	10.3 ↓	10.5 *

beste Teiler 241.0 (8.) 271.0 (7.) 277.3 (6.)

Trefferlage 2.00 mm rechts, 1.52 mm hoch

Streuwert 3.80, horizontal: 4.07, vertikal: 3.52



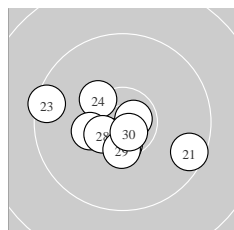
Serie 2:

10.8 *	9.5 ↙	10.7 *	10.5 *	10.5 *
9.8 →	10.6 *	10.5 *	10.2 ←	10.8 *

beste Teiler 118.8 (20.) 136.1 (11.) 230.2 (13.)

Trefferlage 0.45 mm links, 0.21 mm tief

Streuwert 4.09, horizontal: 5.11, vertikal: 2.72



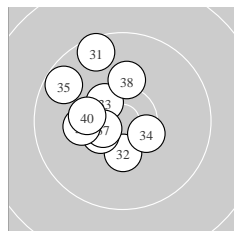
Serie 3:

9.6 ↘	10.7 *	9.5 ↖	10.3 *	10.5 *
10.7 *	10.3 *	10.5 *	10.4 *	10.7 *

beste Teiler 168.6 (26.) 176.4 (30.) 234.9 (22.)

Trefferlage 1.11 mm links, 1.21 mm tief

Streuwert 4.28, horizontal: 5.43, vertikal: 2.67



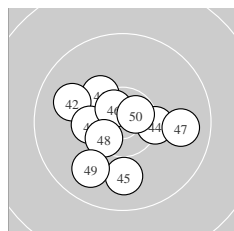
Serie 4:

9.6 ↖	10.4 *	10.5 *	10.5 *	9.7 ↖
10.5 *	10.6 *	10.2 ↑	10.2 ←	10.3 ←

beste Teiler 312.5 (37.) 386.5 (36.) 386.8 (33.)

Trefferlage 2.88 mm links, 1.47 mm hoch

Streuwert 4.12, horizontal: 3.57, vertikal: 4.61



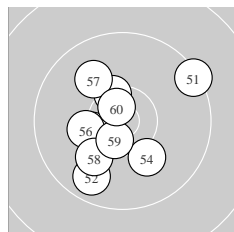
Serie 5:

10.3 *	9.9 ↖	10.3 *	10.3 *	9.9 ↓
10.7 *	9.9 →	10.5 *	9.9 ↗	10.7 *

beste Teiler 225.8 (50.) 238.7 (46.) 369.9 (48.)

Trefferlage 0.89 mm links, 0.89 mm tief

Streuwert 4.48, horizontal: 4.93, vertikal: 3.99



Serie 6:

9.4 ↗	9.8 ↘	10.4 *	10.1 ↘	10.4 *
10.2 ←	10.0 ↖	10.1 ↗	10.6 *	10.7 *

beste Teiler 226.6 (60.) 305.6 (59.) 425.5 (53.)

Trefferlage 1.26 mm links, 0.58 mm tief

Streuwert 5.05, horizontal: 4.97, vertikal: 5.12

ISSF Prone Men – *Wertung* – **Men**

StandNr: 60

Heß, Olaf #44252509

StartNr: 490

27. April 2019 13:11

PSV Olympia Berlin e.V.

Unterschrift des Schützen

Meyton Elektronik